

REVO

FORWARD PIVOT SYNCHRO MECHANISM SIDE TENSION, GAS LIFT, TILT LOCK, J-BACK

APPLICATION:

- Two-piece, synchronized seating requiring separate seat and back mounting capability. Features include side tension adjustment and separate gas lift and tilt lock levers, along with ergonomic benefits from reduced front edge seat rise.

FEATURES:

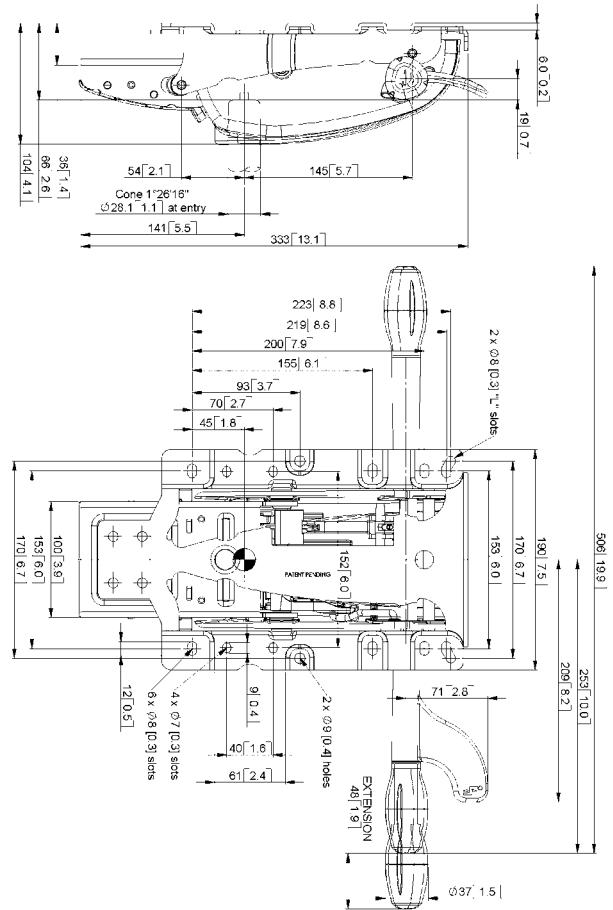
- This unique patented mechanism configuration takes full advantage of synchronized ratio geometry, and successfully combines the benefits gained from a forward-biased pivot location.
- The tilt range has been engineered to provide proper spring tension and adjustability while maintaining even support throughout the entire travel range, satisfying a full spectrum of user sizes and weights.
- A full 21° of tilt travel enables users to achieve a wide variety of positions common in multi-task seating.
- The multiple-position tilt lock feature is designed with an anti-kickback safety feature and is easily accessed from the seated position.
- The side-activated, telescoping, spring tension adjustment handle allows the user a comfortable way to regulate the spring force.
- Chair arms up to 60mm (2 3/8") wide and up to 6mm (1/4") thick can be mounted directly to the mechanism.
- The mechanism will accept J-Back sizes from 60mm (2 3/8") to 90mm (3 5/8") wide and up to 10mm (3/8") thick, and is available in six common mounting patterns.
- An integrated steel safety pin provides an additional measure of protection to ensure the J-Back upright does not become separated from the chair mechanism.
- The REVO mechanism fits many European and North American industry standard mounting patterns, facilitating a chair line platform and use of common T-nut locations.

TECHNICAL DATA:

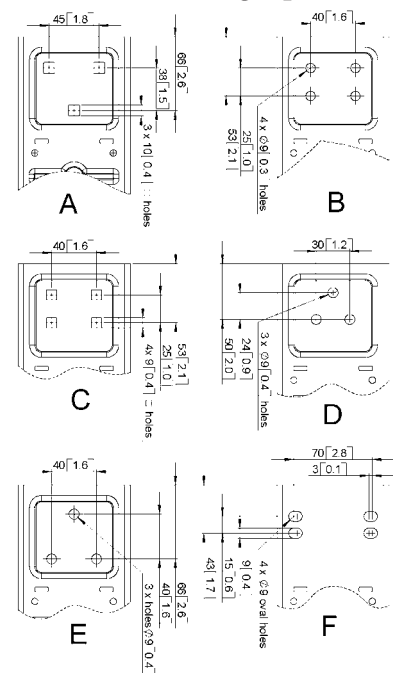
- Back travel recline:** 21° rearward.
- At-rest angle:** 0°.
- Seat travel range:** 9°.
- Synchro ratio:** 2.3° to 1°.
- Spring torque:** Available with standard or high torque spring.
- Tilt lock:** 5 incremental positions.
- User tension:** Side-activated, telescoping, rotary adjustment.
- Mechanism key dimensions:**
 - Height: 104mm (4.1")
 - Width: 506mm (19.9") across levers
 - Length: 333mm (13.1")
- Weight:** 4.5kg (9.9lb).
- Fulcrum position:** 145mm (5.7"); pivot pin to the centre line of the gas cylinder.
- Available gas taper:** 1° 26' 16" (0.603 in/ft) taper – reference 17-4 gas taper.
- Packaging:** 60 per 1150x1100x1000mm (approximately 46"x46"x40") cardboard carton.

OPTIONS:

- Forward Seating:** An integrated, two-position, side-activated rotary handle allows the user to select a task position of - 5° from a normal at-rest position of 0°.
- Seat Depth:** Gordon 5750 Seat Slider device, side-activated with spring return.
 - Profile height: 15mm (5/8")
 - Adjustment range: 55mm (2 1/2")
 - Lockable positions: 7, evenly spaced
- Seat Start Angle (availability TBD):** An alternate reclined at-rest seating position at +4°.
- Independent Back Angle (availability TBD):** An integrated device to adjust the back rest to seat angle independently with a 10° range.
- Steel Safety Pin:** An integral pin located in the back bracket, providing an additional measure of J-Back security. This feature is standard in North America.
- Plastic Cover:** An aesthetically pleasing cover for the area where the J-Back and mechanism connect.



J-Back Mounting Options



FORWARD PIVOT SYNCHRO MECHANISM

SIDE TENSION, GAS LIFT, TILT LOCK, J-BACK

REVO



L&P OFFICE COMPONENTS
INTERNATIONAL

Leggett & Platt Office Components International S.r.l.
Vicolo E. Mattei, 1/3 Z.I. - 31055 Quinto di Treviso (TV) Italy
Tel. +39-0422-470098 r.a. • Fax +39-0422-370393
E-mail: info@lpoci.it

R.E.A. TV219104-Reg. Impr. 39163 Cap. Soc. 99.000 Euro i.v. C.F. 11238040155 P. IVA IT 03079520262



GORDON

comfort | performance | design

Gordon Manufacturing Company
5250 52nd Street SE • Grand Rapids, MI 49512
Tel. 616-698-6060 • Fax 616-698-0231
E-mail: info@gordon.leggett.com



Collier-Keyworth
330 N Greensboro • Liberty, NC 27298
Tel. 336-622-0120 • Fax. 336-622-0150
E-mail: info@ck.leggett.com